

To too or two ?

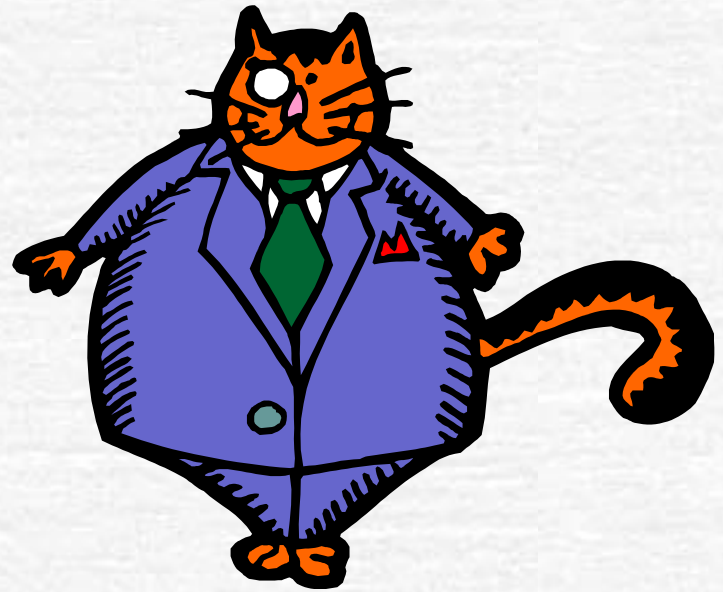
☞ To

☞ I am going **to** the shops.



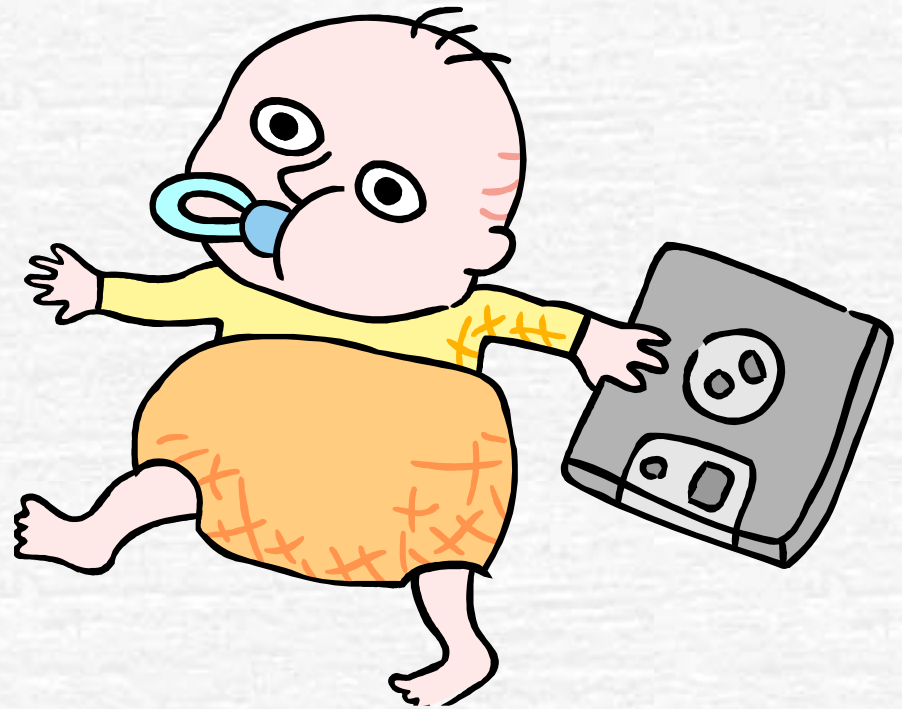
Too (meaning number 1)

- Too
- The cat ate **too** much.



Too (meaning number 2)

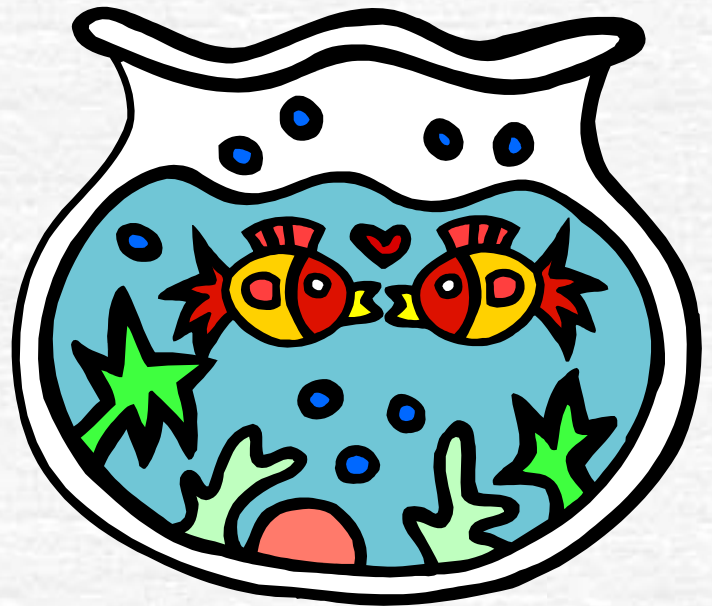
- Too
- Can I come too?



Two

Two

There were two fish.



Complete the sentence.

- ☞ There were _____ many flies.
- ☞ Let's go _____ the swimming baths.
- ☞ I ate _____ bars of chocolate.
- ☞ Tom walks _____ school.
- ☞ I want some trifle _____ please.

